



Ascent Homes

THE TRINITY

3 BEDROOM
TOWNHOUSE



THE TRINITY

3 BEDROOM
TOWNHOUSE

The Trinity is a generous three bedroom family townhouse, with a three floor layout perfect for contemporary living. The ground floor comprises of an ample size kitchen/diner and single bedroom perfect for a study or playroom. The first floor consists of a master bedroom with fully fitted en-suite, a family bathroom, and a second double bedroom. The second floor wholly comprises of carefully designed indoor and outdoor living space including a lounge and large roof terrace offering views over Newbiggin's sandy bay.

Ground Floor

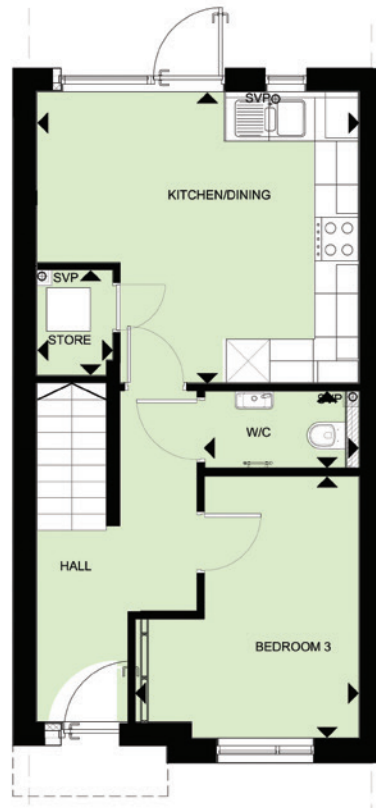
Kitchen/Dining: 4.37m x 4.00m 14'4" x 13'1"
Bedroom 3: 3.07m x 3.60m 10'1" x 11'10"

First Floor

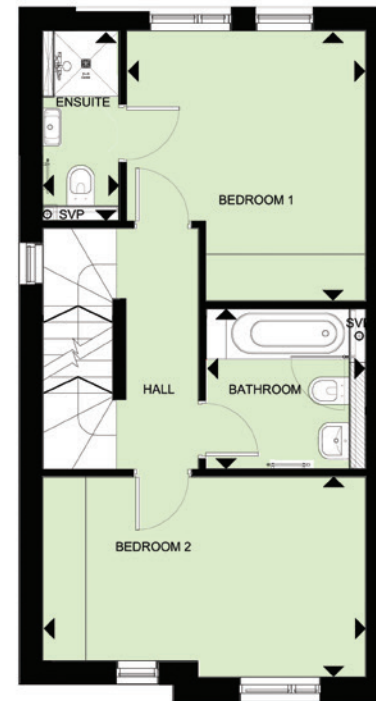
Bedroom 1: 3.27m x 3.71m 10'9" x 12'2"
En-suite: 1.04m x 2.61m 3'5" x 8'7"
Bathroom: 2.18m x 2.20m 7'2" x 7'2"
Bedroom 2: 4.43m x 2.75m 14'7" x 9'0"

Second Floor

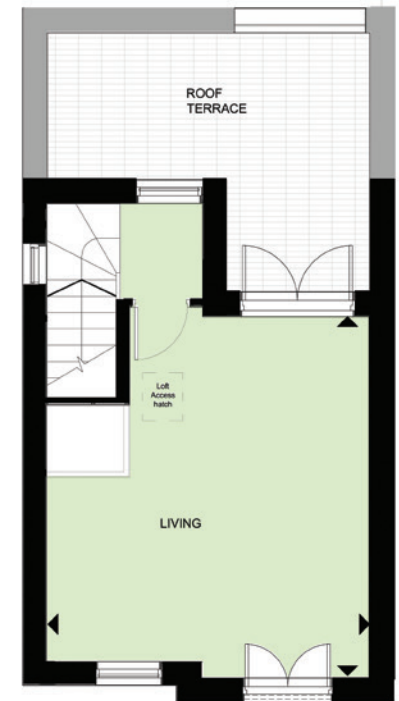
Living Room: 4.43m x 4.98m 14'6" x 16'4"
Roof Terrace: 4.38m x 3.59m 14'4" x 11'9"



GROUND FLOOR



FIRST FLOOR



SECOND FLOOR



Ascent Homes

Ascent Homes, Ashington Workspace, Lintonville Parkway, Ashington,
Northumberland, NE63 9JZ. Tel: 01670 528 403 Email: info@ascent-homes.co.uk

www.ascent-homes.co.uk